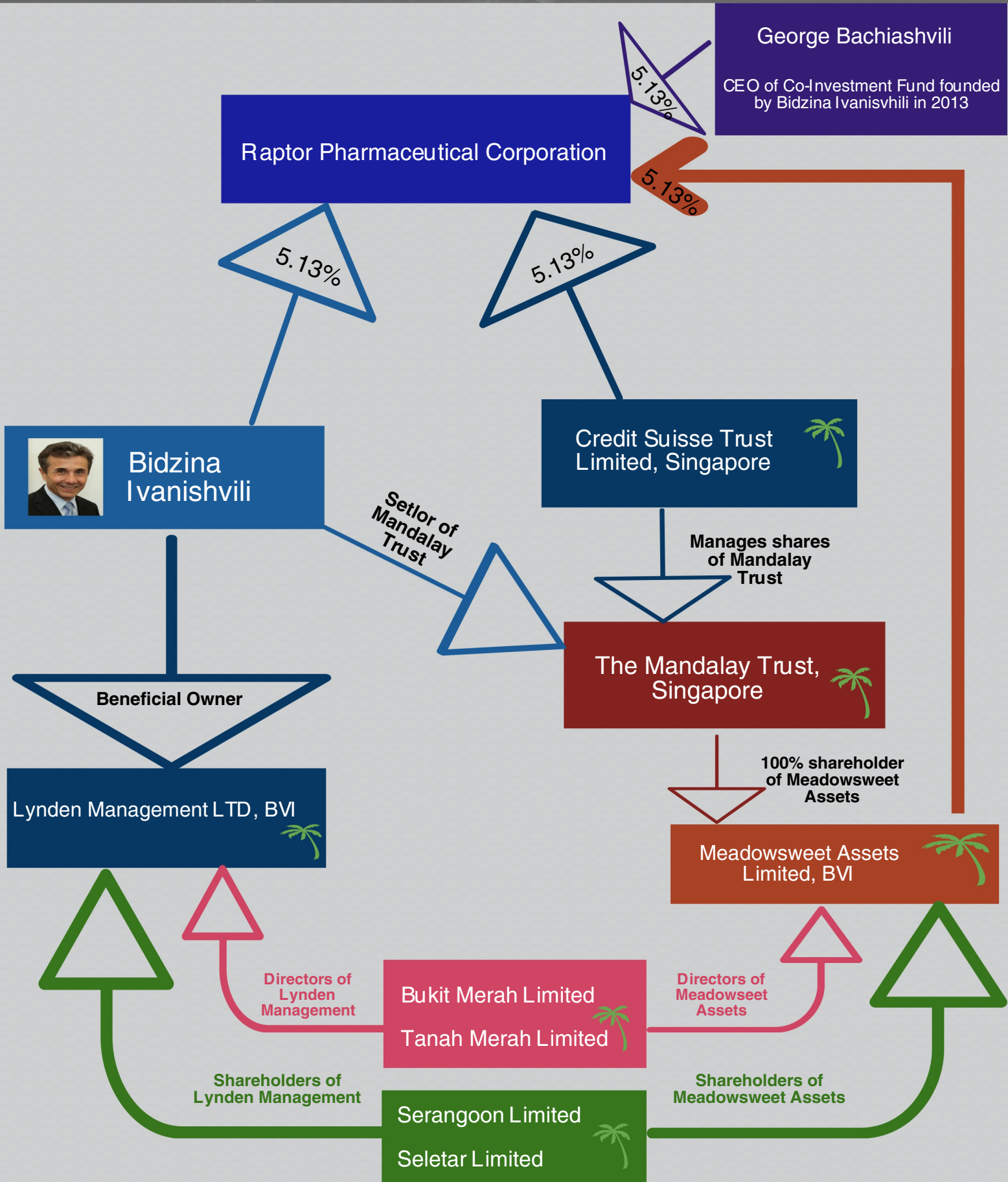


Lynden Management connection to Raptor Pharmaceutical

2016



George Bachashvili

CEO of Co-Investment Fund founded by Bidzina Ivanishvili in 2013

Raptor Pharmaceutical Corporation

5.13%

5.13%

5.13%

Bidzina Ivanishvili

Credit Suisse Trust Limited, Singapore

Setlor of Mandalay Trust

Manages shares of Mandalay Trust

Beneficial Owner

The Mandalay Trust, Singapore

Lynden Management LTD, BVI

100% shareholder of Meadowsweet Assets

Meadowsweet Assets Limited, BVI

Directors of Lynden Management

Bukit Merah Limited
Tanah Merah Limited

Directors of Meadowsweet Assets

Shareholders of Lynden Management

Serangoon Limited
Seletar Limited

Shareholders of Meadowsweet Assets

Bukit Merah Limited, Tanah Merah Limited, Serangoon Limited and Seletar Limited are registered at the same address in Nassau, Bahamas.